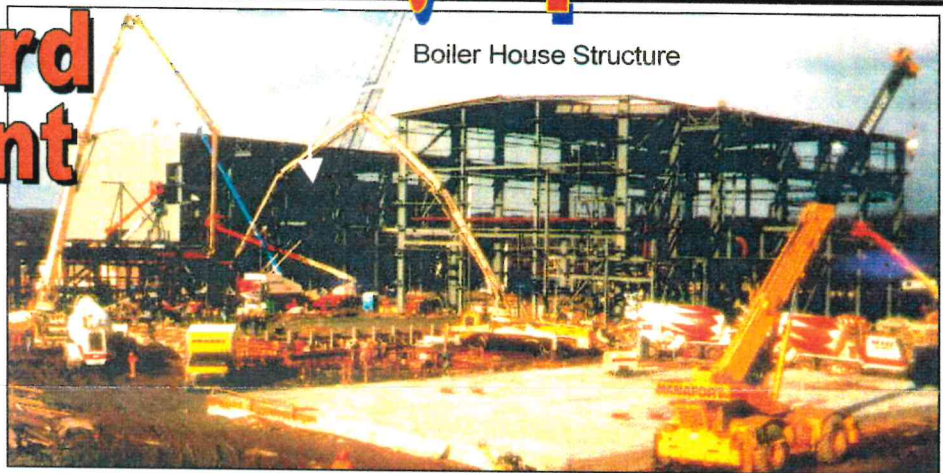




The Milford Power Plant

Having the honor of working on the new 544 mw power plant in Milford CT has been a great source of pride for all of us at Mulvaney Mechanical. We are busy working on the general plumbing and HVAC systems, outfitting the interior spaces of ten on-site structures. Construction of this plant was undertaken by PDC- El Paso Milford LLC of Auburn, MA. It is a state of the art combined cycle, gas turbine electric generating plant which will deliver a new source of clean dependable power to Connecticut.

The photo above was taken prior to the shocking tragedy that struck on the morning of February 2, 2000. As a section of the steel framed boiler building collapsed, it fell against a nearby construction crane causing a chain reaction that took the lives of two construction workers and injured two others. The accident is presently under review by the authorities to determine what caused the collapse. Luckily, our portion of the project involved interior space outfitting which comes at a later stage of the construction process. Thankfully, no one in our crew



Boiler House Structure

was exposed to the carnage caused by the collapse.

Construction began on this project last May with completion expected sometime in January 2001. Given the magnitude of this terrible accident, no one is quite certain when the project will be done. Designs used for this \$244 million power station have been successfully used around the world without incident. It is expected however, that experts will review all contributing aspects before the possible cause is uncovered. Accidents can and do happen. Construction is an inherently dangerous business. We must never drop our commitment to safety.

The hearts and prayers of all of us at Mulvaney Mechanical are with the families, friends, and co-workers of the stricken men. They have our sincerest sympathy.

Famous Quotations

"There is only one boss, the Customer. And he can fire everyone in the company from the Chairman on down, simply by spending his money somewhere else." (Sam Walton)

"Diplomacy is the art of saying "Nice Doggie" until you can find a rock." (Will Rogers)

"If I had my life to do over again, I'd be a plumber." (Albert Einstein)

Connecticut Construction Manual Nearing Completion

The Connecticut Construction Guidelines Coalition, a cross section of construction related associations, has been creating a guidance manual targeted toward the construction industry. This specialized group has been writing a comprehensive informational guideline to assist those in the construction industry on future projects. It will cover all aspects of the design, construction and completion of building projects and also include various other associated topics related to the construction process.

The coalition is made up of fourteen professional associations and sixteen individual members. It is chaired by Richard Jagoe of THP. George Mulvaney serves on the coalition as an active contributing member.

If you know the answer to the following question you could

WIN Dinner for 2

What was the first television program/series to show a bathroom or toilet on the air.

Call or send in the correct answer and win dinner for two. If more than one correct entry is received, a winner will be selected at random. Enter as often as you like.

Mulvaney is on the Move!



Mulvaney Mechanical Inc. has begun consolidation of its office, shop and service department into a new site located on the West side of Danbury. Our new facility has over 13,000 square feet of space, easy access to major highways and should allow us to provide even better service than ever before.

As our move is finalized, we feel we will be in a better position to grow and prosper in the new millennium.

Tidbits of Trivia

- On average 16 million tons of rain and snow fall on the earth each and every day.
- There is a separate strand of corn silk for each and every kernel of corn on the cob.
- There are thousands of animals with four legs, but the elephant is the only one with four knees.



Mulvaney
MECHANICAL, INC.
MECHANICAL CONTRACTORS

275 Keeler Drive
Ridgefield, Connecticut
203-797-8005 fax 203-794-1786
e-mail: mulvaney@mulvaneyinc.com