

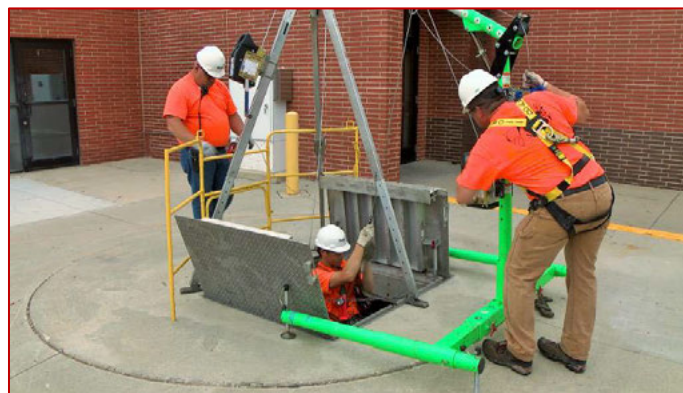
## TOPIC: Confined Spaces – Acceptable Entry Conditions #8

### PRIMARY POTENTIAL HEALTH AND PHYSICAL HAZARDS

- INSUFFICIENT OXYGEN – ASPHYXIATION – SUFFOCATION
- TOXIC AIR CONTAMINANTS – IMPAIRMENT – INCAPACITATION – DEATH
- FLAMMABLE GASES & VAPORS – FIRES & EXPLOSIONS

### PRIMARY EXPOSURES FOR MECHANICAL CONSTRUCTION WORKERS

- Entry into pipelines, ductwork, equipment housings, boilers, manholes, sewers, vaults, tunnels, shafts, vessels, pits, tanks, etc. that have limited or restricted means for entry or exit and are not designed for continuous human occupancy
- Hot work inside a confined space that could change what would otherwise be acceptable atmospheric conditions to hazardous atmospheric conditions



### ACCEPTABLE CONDITIONS WITHOUT ADDITIONAL PROTECTIVE MEASURES

- You have successfully completed the appropriate confined space entry safety training, and agree to carefully following the safe work practices/procedures from your training;
- Oxygen levels in the space are between 19.5% and 23.5%;
- Flammable gases/vapors/mists levels in the space are at or below 10% Lower Flammability Level (LFL);
- Toxic air contaminants in the space are at or below allowable/safe levels (parts per million (PPM));
- All physical hazards are eliminated or isolated;
- All other recognizable safety and health hazards are eliminated or isolated;
- Airborne combustible dust does not obscure vision at 5' distance or less; and
- Your company's designated *Competent Person* for confined space entry has informed you that it is safe to enter the space.